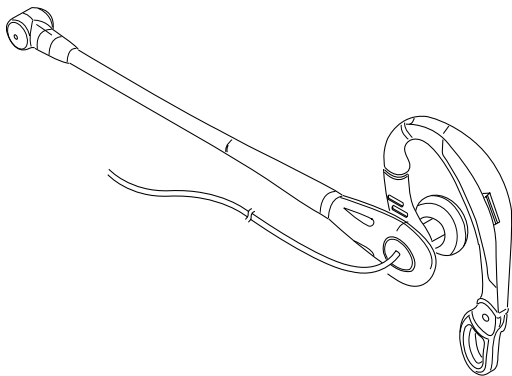


hameco

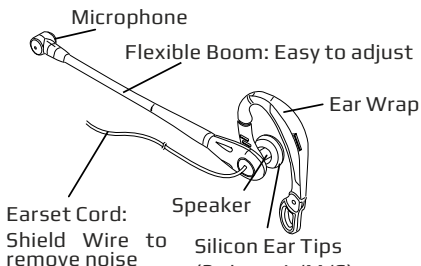
HS-1100 Earset



User Manual

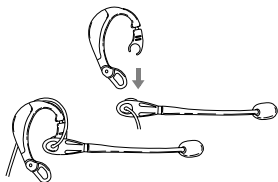
EARSET FEATURES

HS-1100



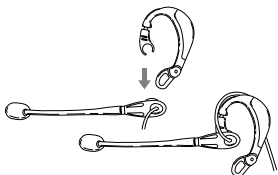
Usage on the Right Ear:

Like the diagram on the left, set the ear wrap on the earset body and lay the cord in the cord holder.



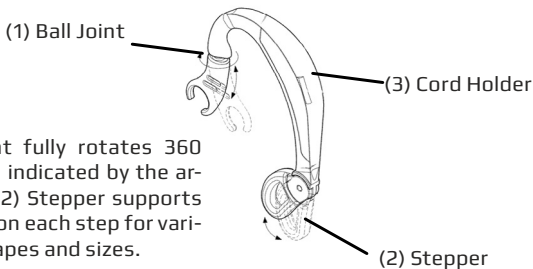
Usage on the Left Ear:

Like the diagram on the right, set the ear wrap on the earset body and lay the cord in the cord holder.



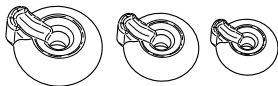
EARSET FEATURES

HS-1100

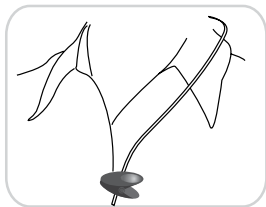
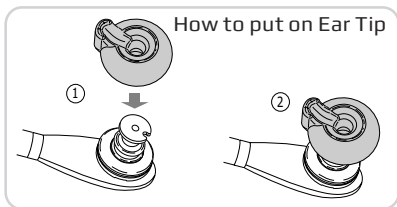


(1) Ball joint fully rotates 360 degrees as indicated by the arrows and (2) Stepper supports best wear on each step for various ear shapes and sizes.

Ear Tips are available in 3 different sizes to fit the exact size and shape of your ear.



Ear Tips: 3 sizes (L/M/S)



Attach the clothing clip onto your shirt, this will reduce the weight of the earset cord and prevent the cord from becoming tangled.

SAFETY

For your own safety, this product should only be used with CE and RoHS approved equipment. Using this headset with non approved equipment could void the warranty of this product.

DISPOSAL OF YOUR PRODUCT

Municipal waste stream. Old appliances must be collected separately in order to optimise the recovery and recycling of the materials they contain and reduce the impact on human health and the environment. The crossed out "wheeled bin" symbol on the product reminds you of your obligation, that when you dispose of the appliance it must be separately collected. Consumers should contact their local authority or retailer for information concerning the correct disposal of their old appliance.

